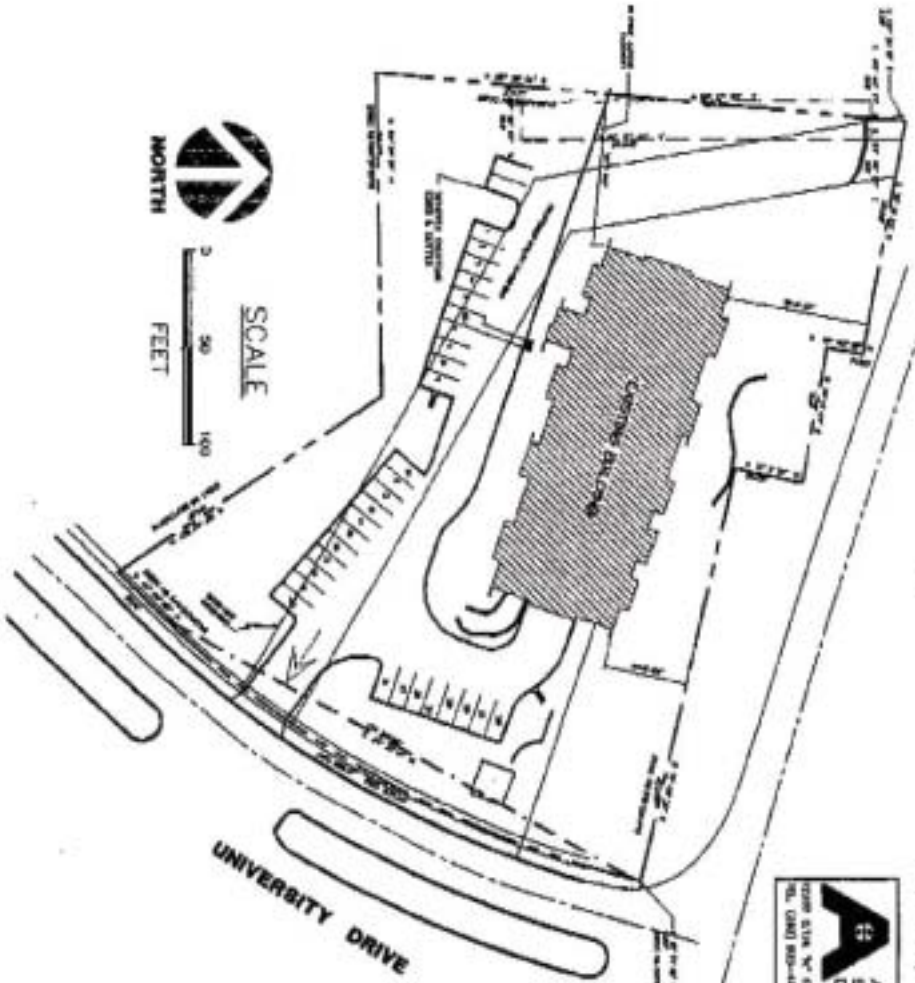


**SILVERNAIR ROAD**



**'THE BASTIDE AT THE GATEHOUSE'  
A CONDOMINIUM**

PARCEL NO. 1 OF CERTIFIED SURVEY MAP NO. 9446, VOLUME 96, PAGES, 131-137, DOCUMENT NO. 286588, BEING A PART OF THE NORTHWEST 1/4 OF THE NORTHWEST 1/4 OF SECTION 29, TOWN 7 NORTH, RANGE 19 EAST, IN THE CITY OF WAUKESHA, COUNTY OF WAUKESHA, STATE OF WISCONSIN.

**AMERICAN SURVEYING & CONSTRUCTION, INC.**  
 1001 5TH W. GALLERIA, WISCONSIN STATE COLLEGE, WI 53598-1200  
 TEL: (608) 833-4375 FAX: (608) 833-3296

UNIT ADDRESSES:

212 NORTH UNIVERSITY DRIVE  
 WAUKESHA, WISCONSIN

UNIT 186	UNIT 246	UNIT 306
UNIT 190	UNIT 250	UNIT 310
UNIT 194	UNIT 254	UNIT 314
UNIT 198	UNIT 258	UNIT 318
UNIT 202	UNIT 262	UNIT 322
UNIT 206	UNIT 266	UNIT 326
UNIT 210	UNIT 270	UNIT 330
UNIT 214	UNIT 274	UNIT 334
UNIT 218	UNIT 278	UNIT 338

NOTE:  
 -SEE SHEETS 4 & 5 OF 31 FOR PARKING  
 STALL LOCATIONS.  
 -SEE SHEETS 6 & 7 OF 31 FOR ROOF FLOOR  
 UNIT LOCATIONS.  
 -SEE SHEETS 8 & 9 OF 31 FOR SECOND  
 FLOOR UNIT LOCATIONS.  
 -SEE SHEETS 10 & 11 OF 31 FOR THIRD  
 FLOOR UNIT LOCATIONS.



"LANDSCAPE ARCHITECT"  
 STATE OF WISCONSIN  
 (COUNTY OF WAUKESHA)

A. FRED L. BAILEY, Registered Land Surveyor, do hereby certify that I have thoroughly examined the plans and specifications for the above described project and the same conform to the provisions of the Statutes of the State of Wisconsin, and the Land Surveyor's Code of Ethics, and the provisions of the laws and ordinances now and hereinafter in force in the City of Waukesha, Wisconsin.

DATED THIS 28TH DAY OF JANUARY, 2002  
*A. Fred L. Bailey*  
 A. FRED L. BAILEY, REG. NO. 1588

AMERICAN SURVEYING & CONSTRUCTION, INC.  
 1001 5TH W. GALLERIA, WISCONSIN STATE COLLEGE, WI 53598-1200  
 REGD. AS ENGINEER IN LIMITED CERTAIN STATES OR PART OF THE CONDOMINIUM UNIT  
 PROVIDED BY THE ARCHITECTURE, OF THE PLAN, IS HEREBY RECOMMENDED.