

TDI ASSOCIATES, INC.
ARCHITECTS, ENGINEERS, PLANNERS

N8 W22350 JOHNSON DRIVE, SUITE B4
WAUKESHA, WISCONSIN 53186
PHONE 262-437-0400 FAX 262-437-0401

**AUBURN RIDGE CONDOMINIUMS
CABERNET MODEL**

**W. CAPITOL DRIVE
PEWAUKEE, WISCONSIN**

TDI ASSOCIATES, INC
All Rights Reserved

OWNERSHIP OF DOCUMENTS

This document, and the ideas and design incorporated herein, as an instrument of professional service, is the sole property of TDI Associates, Inc., and is not to be used in whole or in part for any other project or purpose without the expressed written authorization of TDI Associates, Inc.

Sheet Title

FIRST FLOOR PLAN

Issued For:

Date:

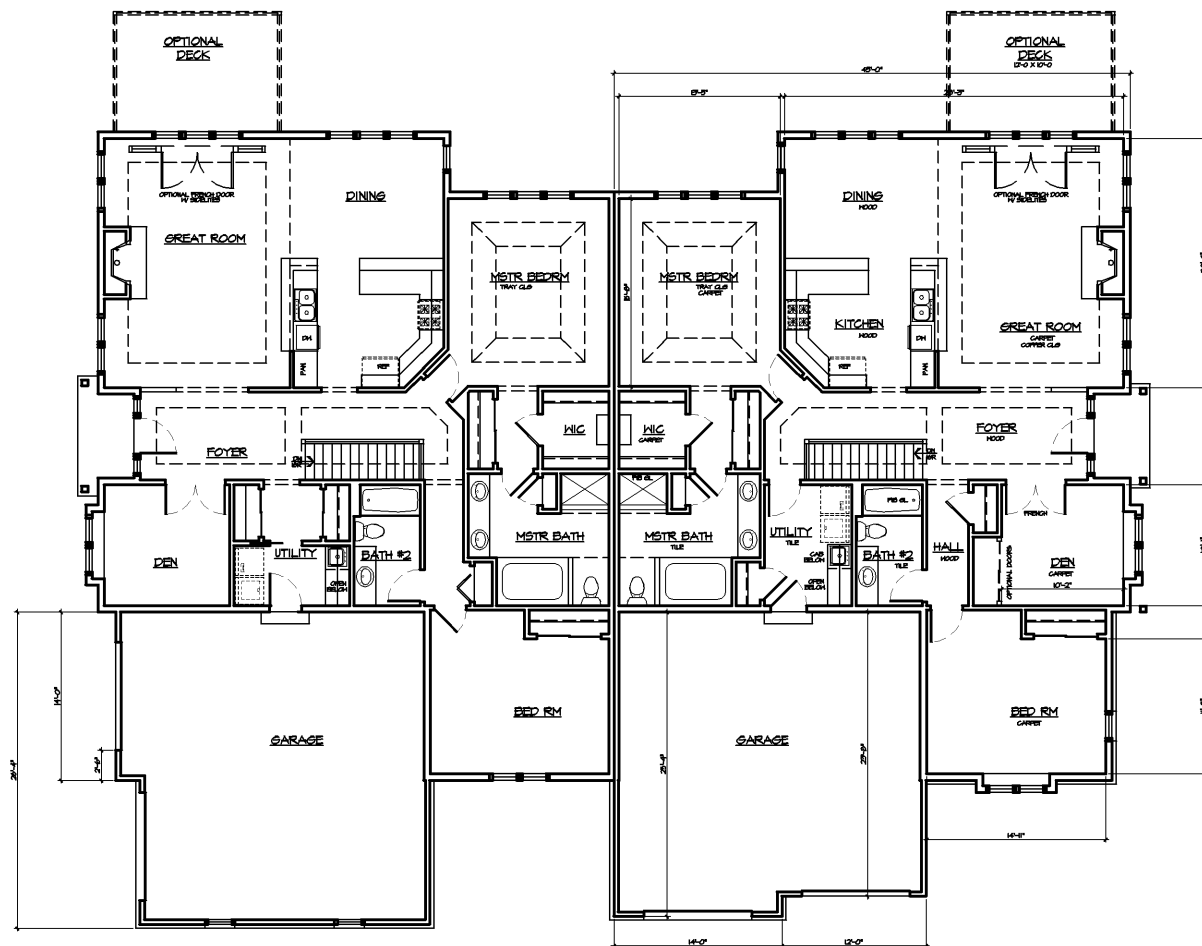
Date: **06-9-10**

Job NO.: **03104.010**

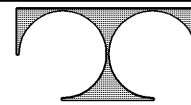
Drawn By: **RJH**

Sheet No.

A1.1



1 FIRST FLOOR PLAN
1/16" = 1'-0"



TDI ASSOCIATES, INC.
ARCHITECTS, ENGINEERS, PLANNERS

N8 W22350 JOHNSON DRIVE, SUITE B4
WAUKESHA, WISCONSIN 53186
PHONE 262-437-0400 FAX 262-437-0401

AUBURN RIDGE CONDOMINIUMS
CABERNET MODEL

W. CAPITOL DRIVE
PEWAUKEE, WISCONSIN

TDI ASSOCIATES, INC
All Rights Reserved

OWNERSHIP OF DOCUMENTS

This document, and the ideas and design incorporated herein, as an instrument of professional service, is the sole property of TDI Associates, Inc., and is not to be used in whole or in part for any other project or purpose without the expressed written authorization of TDI Associates, Inc.

Sheet Title

FRONT ELEVATION

Issued For:

Date:

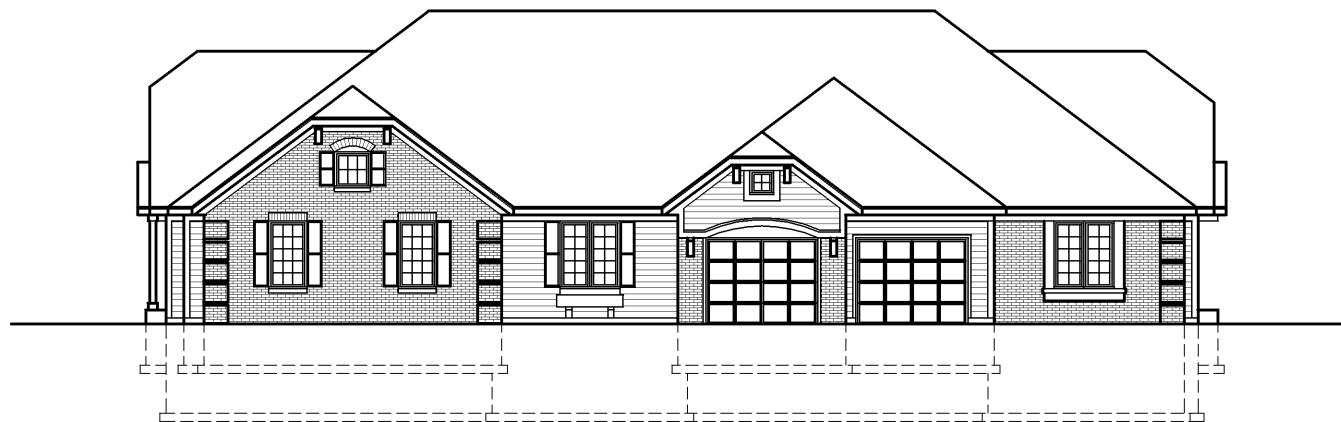
Date: 06-9-10

Job NO.: 05104.010

Drawn By: R.J.H

Sheet No.

A2.1



1 FRONT ELEVATION
1/16" = 1'-0"